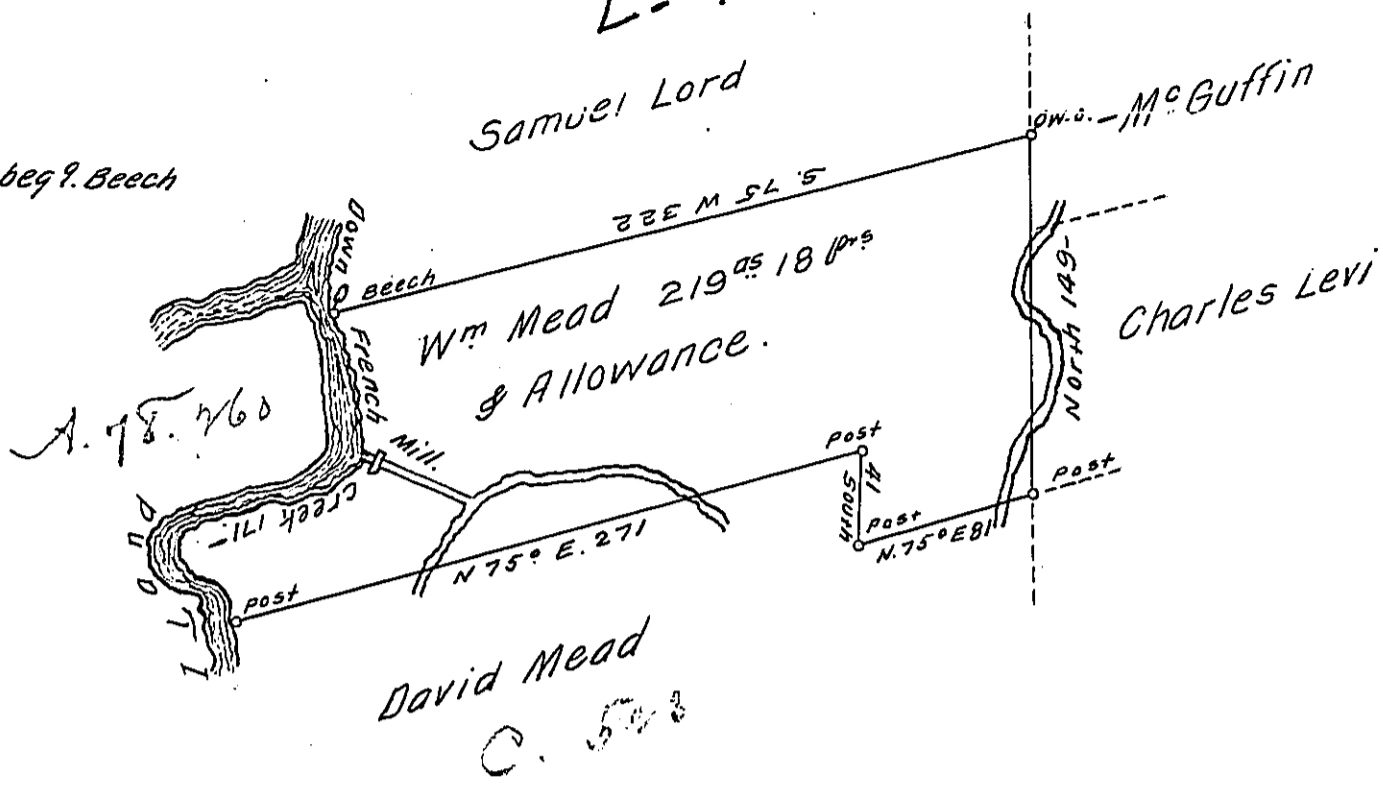


L-475

River Courses beg. Beech

- S 26° E. 10
  - S 17° E. 28
  - S 1° E 10
  - S 25 W 21
  - S 75 W 44
  - S 86 W 12
  - S 5° E. 13
  - S 64° E. 17
  - S 17 1/2° E. 10.
- 171 #5



Situate in Aleghiny County on the East side of French Creek Contain-  
 ing two Hundred and Nineteen Acres and Eighteen perches and  
 allowance of SIX # Cent &c Surveyed the 7<sup>th</sup> day of May 1794 Including  
 his Improvement.

W<sup>m</sup> Power D.Y. 55

To Daniel Brodhead Esq<sup>r</sup> }  
 Surveyor General.

N.B. this Tract was Improved upon at the time of the Op<sup>n</sup>ing the  
 Office in April 1792.

IN TESTIMONY that the above is a copy of the original remaining on file in  
 the Department of Internal Affairs of Pennsylvania, made  
 conformably to an Act of Assembly approved the 16th day of  
 February, 1833, I have hereunto set my Hand and caused  
 the Seal of said Department to be affixed at Harrisburg,  
 this twenty first day of June 1911.

*Henry Hoar*  
 Secretary of Internal Affairs.